

SimpleCoat

Selective Conformal Coating System

Cost-effective Solution for Conformal Coating

Conformal Coating System Features

SimpleCoat is ideal for selective conformal coating and dispensing applications that require a high level of accuracy and repeatability. It is an ideal solution for medium and low volume. A stand-alone configuration is also available for manufacturing that does not require a conveyor.

SimpleCoat is equipped with a robust 3-axis motion platform that, in the base configuration, includes a spray valve and a needle valve. An optional volumetric pump may be used in place of the needle valve.

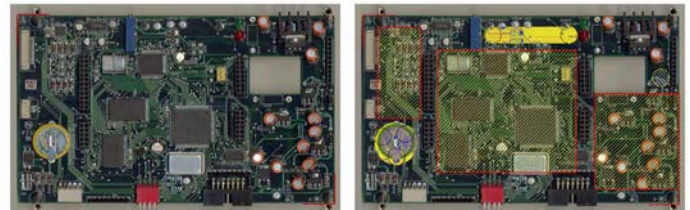


Fluid is supplied to the dispense valves via two 300 ml external reservoirs. Level detects, as well as large reservoirs, are available.

The stainless steel surfaces of the work area are easily cleaned in the event of a spill. An exhaust port, located below the work surface, maintains a minimal fume level by using an integrated flow sensor that trips an alarm if exhaust drops below a set level.

SimpleCoat software is installed on a user-supplied laptop computer. Programming is easy and can be done either by manually teaching a program or by using a JPG image. All dispense parameters and motion parameters can be easily altered with the easy-to-use user interface. Various shapes, patterns, and areas can also be programmed.

SimpleCoat software is installed on a user-supplied laptop computer. Programming is easy and can be done either by manually teaching a program or by using a JPG image. All dispense parameters and motion parameters can be easily altered with the easy-to-use user interface. Various shapes, patterns, and areas can also be programmed.



Programming via JPG image (before and after).

Standard Features

- Reliable XYZ Motion System
- Full-featured Programming, including Teach from .JPG
- Inline Operation with SMEMA Communication
- Spray and Needle Valve
- Purge and Solvent Cups
- Stainless Steel Surfaces
- Bottom Side Fume Extraction with Exhaust Flow Sensor
- Two 300 ml Cartridges for Fluid Feeding
- Internal Black Light for Coating Inspection
- Keyed Maintenance Mode
- Light Tower



300 ml External Reservoir



Valves at rest in Solvent Cups

GPD Global
Precision Dispensing Systems

www.gpd-global.com • request@gpd-global.com

Headquarters 611 Hollingsworth Street, Grand Junction, CO 81505 USA • T: +1.970.245.0408 • F: +1.970.245.9674
GPD Global (Asia Pacific) Bayan Lepas, Penang, 11900 Malaysia • T: +60.12.555.0909

SimpleCoat - Selective Conformal Coating

Add-On Options

COMMON OPTIONS*	DESCRIPTION
Tilt and Rotate	Tilt and rotate for spray valve.
Low Level Material Sensor	Detects fluid level in reservoir
External Pail with Scale Level Sense	Large volume reservoir
Volumetric Pump	Alternative to needle valve.
Multiple Reservoirs	Easy fluid exchange.

* Contact GPD Global about additional options and features.

Specifications

Capacity

Dispense valves..... Up to 2 valves

Motion Control

XYZ Axis Drive Stepper motors plus ball screw
 XYZ Repeatability..... 50 µm
 Speed 350 mm/sec (13.78"/sec)

Coating Area

XYZ Travel 430 mm x 430 mm x 50 mm (17" x 17" x 2")
 Bottom Side Clearance..... 100 mm (4")

Conveyor

Conveyor Type..... Pin Chain
 Conveyor Width (minimum)..... 50 mm (2")
 Conveyor Width (maximum)..... 430 mm (17")
 Edge Clearance 5 mm (0.2")
 Transport Height..... 940 mm - 965 mm (37" - 38")
 Communication SMEMA

Facility Requirements

Air Supply 6 bar 85 PSI dry clean air
 Exhaust Port 250 CFM, 127 mm (5") diameter
 Power 110/220 VAC, 50/60 Hz

Dimensions & Weight

Footprint (W x D x H)..... 1000 mm x 1400 mm x 1550 mm
 (39.37" x 55.12" x 61.02")
 Weight 275 kg (605 lbs)

Operating Control

Minimum requirements..... Customer-supplied laptop with Ethernet connection and Windows® 7 or newer.

Certification

CE



Add-On Option: Volumetric Pump



Add-On Option: Multiple Reservoirs with Level Detect.